



Joy Junction

The Good News Gazette

A publication of Joy Junction, Inc., New Mexico's largest homeless shelter

Planting Hope and Growing New Life for 23 Years

Joy Junction was founded in 1986, and is now New Mexico's largest homeless shelter. We provide emergency food, clothing, programs and lodging to about 300 women, children and families on a daily basis.

Anyone who needs our help is welcome at Joy Junction, without regard to race, color, age, national origin, sexual orientation or religion.

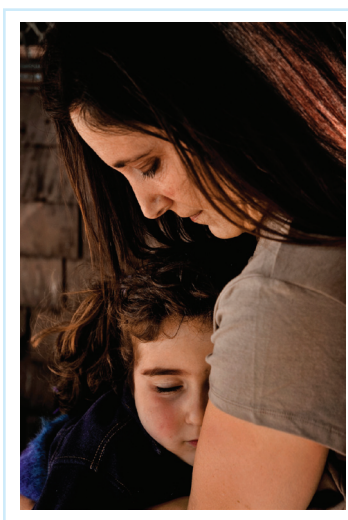
Joy Junction is a non-profit, non-denominational church under section 501(c)(3) of the IRS code. We are supported entirely by donation and program revenues and receive no government funding. Joy Junction has been located at

4500 2nd St. SW, in Albuquerque's South Valley for 23 years.

In 2008, Joy Junction served approximately 130,000 hot meals, and provided over 110,000 nights of lodging, which is an increase of about 100% in five short years.

Joy Junction has a mandate to provide a hand up (not just a hand out) to those who are in need. We meet the basic needs of food, clothing and shelter, providing an environment that is safe,

loving and free from the dangers and weather of the streets.



Spiritually, it is Joy Junction's mandate to provide hope and show love to each and every guest, and to provide teaching and other opportunities to develop a personal relationship with God.

Residents are invited to participate in a six month life recovery program (Christ in Power Program or CIPP) that offers help to recover from addictions and to obtain a strong spiritual foundation.

see "Planting Hope," page 2

Inside

From Our Founder	2
"Parking" to a New Career	3
Send a Lifeline	3
Legacy of Hope	5
A Ride That Could Save a Life	6
A Super Volunteer	6
Thrift Shoppe on a Mission	7
Spread the Joy	7
Vehicle Donation Program	8
How You Can Help	8

Urgent Attention Required

The "Inn" is full. There is not even a stable to be had.

Virtually every night, some 300 women, children and families count on Joy Junction for safety, shelter, food and clothing.

And virtually every night, we turn away others who are in dire need of the same life essentials; people who are equally in need of a new start and a hand up in life. It is truly heart breaking to have to say, "Sorry, we are full and can't take any more."

Many individuals and families have found themselves homeless for the first time, devastated by a vicious economic climate that shows no mercy.

Just five years ago, Joy Junction seemed pretty full with about 150 residents. For the last couple years we have hovered at around 300, taxing our facilities and staff to the limit.

Since last year, the demand has continued to increase and we are regularly turning

see "Urgent," page 4

Joy Junction

“A Hand Up,

From Our Founder & CEO



I am delighted to welcome you to the inaugural edition of “The Good News Gazette.”

Joy Junction is proud of the work we do in our community and I hope you will take the time to read through this publication and get to know us a little better.

As I think back, it seems somewhat hard to believe that we’ve been serving the homeless community in Albuquerque for 23 years. For the most part it feels like yesterday, thanks to the faithful support of individuals, businesses and churches. Joy Junction relies 100% on donor contributions and does not receive any government funding.

Your support over the years has allowed us to impact many lives. Now, at a time when the economy has forced many to the streets and we are at capacity, we need you more than ever.

I am truly honored to be acquainted with everyone who has supported or been a part of our work over the years.

A handwritten signature in blue ink, appearing to read "Jeremy Reynolds".

Jeremy Reynolds, Ph.D.

Planting Hope (continued from page 1)

Participants are also trained in various life skills and prepared to reintegrate into mainstream society and find employment.

Many graduates are assisted in finding entry level jobs, and provided with transitional housing to allow them to work for a time before having to produce the security deposits and stable employment history required for rental agreements.

In this way, Joy Junction provides a hand up and helps to break the cycle of homelessness for many of our residents.

An unforgiving economy has increased the challenging nature of providing services to needy women, children and families. More and more people are coming to our doors for help.

Joy Junction is seeing many first-time homeless families, who have been victimized by an economic climate that is no respecter of persons.

Our facilities are at capacity with some buildings in need of major repair. It is heart breaking to turn away those in need when we are at full capacity. Sadly, this has been a regular occurrence over the course of this year.

All of us at Joy Junction feel an obligation to provide additional beds, a move that will allow us to provide basic care and offer a hand up to those who are still on the streets.

In addition, we know we can better serve those who want to make changes in their life by adding a second phase to our CIPP program. With expanded facilities, equipment and staff, we can provide more advanced skills and training.

Our history inspires us to trust God to provide the resources to undertake such a project. When Joy Junction began, we rented a portion of our present 52 acre facility. 12 years later, a mortgage (and the donation of ten acres) allowed us to “own” a total of 31 acres!

We knew that 21 adjacent acres would be necessary for future growth and program expansion, and so we believed that God would provide the opportunity.

Bonds and other options were explored, when a refinance opportunity arose in 1999 that allowed us to secure the final 21 acres!

Once again, God provided. We have been able to pay our mortgage promptly, and have even made some pre-payments on principal, in preparation of a new building project!

Please read “Urgent Attention Required” (which starts on page one) to find out more about our expansion plans.

We covet your prayers as we do our best to meet the needs of those who come to us right now, and prepare to meet the needs of tomorrow.

Joy Junction is a 501(c)(3) charity

Joy Junction

Not A Hand Out”

“Parking” to a New Career

Did you know that Joy Junction manages two parking lots in Albuquerque? One is located downtown at 1st and Copper, and the second is at the north end of Old Town in the San Felipe Plaza on Mountain Ave.

These parking lots have been “donated” to Joy Junction by local business people to help support our work. Every time you park in one of the lots managed by Joy Junction, you are helping us to provide a hand up to someone in need.

Did you know that these parking lots also provide entry level employment for graduates of our life recovery programs?

It’s true! Following six months of recovery, along with spiritual and life skills training in our program, these parking lots offer job opportunities for graduates trying to find their way to a new career.

So, in addition to the financial support that comes from parking revenues, you could be helping to transform a life. You may provide dignity to someone who has not experienced any for some time.

Your monthly or daily purchase could literally be helping to break the cycle of homelessness for someone in need.

While our graduates transition back to the tax paying working class, they are also developing a track record of employment that will assist them in securing better paying jobs in the future.

If you are reading this story and have a parking facility that is managed by an outside company, won’t you consider allowing Joy Junction the opportunity to provide these services for you? You could be providing a fresh start and making a difference in lives that are precious. Please call the Joy Junction office at 217-9586 to discuss your parking management needs.



And when you are planning that trip to Old Town or the museums on Mountain, why not park in the San Felipe Plaza parking lot to help Joy Junction and help someone looking for a hand up?

Or, when you plan that evening or weekend trip downtown to a restaurant or a movie, please remember to park in the Joy Junction lot at 1st and Copper. Your support can change a life!

Can You Help?

If you have a parking lot in need of management, call (505) 217-9586. You can help Joy Junction provide a new start for someone in need.

Send a Lifeline

Joy Junction provides hope to about 300 women, children and families each and every night.

Even so, there are many men, women, children and families spending the night on the streets in the greater Albuquerque area.

Based on Albuquerque Public Schools estimates, more than 5,000 homeless children are enrolled in Albuquerque schools. And according to a report released by the National Center on Family Homelessness, more than 8,900 children are homeless in New Mexico each night.

Joy Junction has a vision to obtain and equip a hot lunch wagon that could be filled with sandwiches, hot coffee, hot soup and doughnuts. This lunch wagon would visit areas frequented by the homeless to provide a lifeline in the form of food, drink and prayer. This lifeline of hope will say “someone cares,” and may even save a life.



The only obstacle to fulfilling this vision are the finances to make it happen. We share this thought in the hopes that someone (or a group) can help us get this off the ground and onto the streets.

Can you help us obtain and equip a hot lunch wagon to send a lifeline of hope? If so, please see page eight or call us at (505) 217-9586. May God richly bless your generosity!

Joy Junction



Urgent (continued from page 1)

people away when we cannot safely take any more. It is heartbreaking and grievous for those who must stay on the streets, and likewise for our staff, who give their lives to serve the homeless.

Joy Junction directors, executives and staff have felt an overwhelming and urgent burden to begin preparations to expand and renovate facilities, and to provide new programs and assistance to those who are homeless and in need.

As you may know, we currently offer a six month life recovery program (CIPP – Christ in Power Program) designed to introduce our residents to God, lay a strong spiritual foundation, teach life skills, and help to recover from addictions and patterns that have hurt them in the past.



At the completion of the program, many graduates receive assistance in finding entry level employment, and transitional housing to help them reintegrate to the ranks of the tax paying employed.

Our program and graduates have seen much success, but we recognize that many may still be only a paycheck or two away from trouble, especially those whose skills and experience only qualify them for minimum wages.

Joy Junction uses various buildings on our 52 acre property. There are dorm and barracks buildings, transitional housing units and our "Multi."

The Multi Purpose Building or Multi receives the most use and hard wear at Joy Junction. It serves as the dining and food preparation facility for about 10,000 hot meals or more each month. In addition, the Multi houses the largest bathroom and shower area available for Joy Junction residents.

A lack of suitable facilities has the Multi set up with cots on a daily basis for the residents who are not able to be placed in a dorm, barracks or other accommodations. The front office, CIPP office, four staff offices and other general purpose areas are also located in the Multi.

Bible studies, chapel services, spiritual activities and other teachings are housed in the Multi, as the existing chapel and schoolhouse buildings have significantly deteriorated and are unable to serve their once vital purposes.

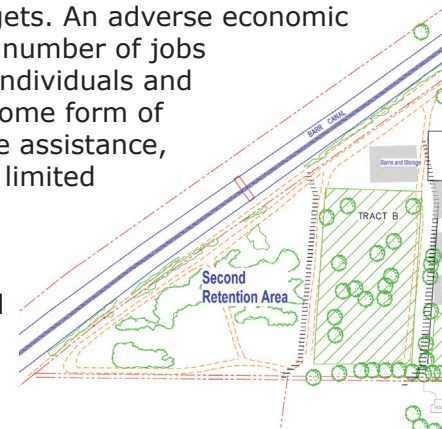
It is unclear whether renovation is possible for either the Chapel or Schoolhouse due to lengthy deterioration and exposure to the elements, among other environmental issues.

At minimum, we urgently require 100 additional beds, a move that will allow us to provide basic care and offer a hand up to many who are still on the streets. A new/renovated Chapel facility is also needed for spiritual training, church services, educational purposes and to lessen traffic and use in the Multi.

A Women's Center is another part of our vision that will allow us to provide a segregated facility for battered women and children.

Our vision also has us wanting to do more to prepare our life recovery graduates. It is evident that the employment picture across the United States will continue to change and evolve as employers struggle to balance budgets. An adverse economic climate has reduced the number of jobs available that will allow individuals and families to live without some form of government or charitable assistance, especially for those with limited training and skills.

With a new vocational training facility, we could provide more advanced skills and training for our graduates. After



Joy Junction is a 501(c)(3) charity

Joy Junction



completing the first level program and a period of entry level employment, those who are interested in learning skills for a new career could participate in on-site re-training or trade schools such as: GED; Hairstylist/Barber; Nails; Office Equipment lab; Office Skills; various computer labs and more.

As a result of hard use over the years, the Multi requires significant renovation and upgrade, particularly in the areas of flooring, electrical, HVAC and offices.

We estimate that construction and renovation will cost a minimum of 2.7 million dollars, using modest materials and presuming a reasonable amount of donated material, labor and services. A preliminary site plan proposal is illustrated below.

Will you write a check today to help us get started? Perhaps you can donate materials or professional services to the overall project? Maybe you would like to sponsor or dedicate a specific segment of construction, like our chapel for example?

Any help you can provide will ultimately make a difference to someone in need. Please help today and see page eight for information on how you can be a part of this project!



Leave a Legacy of Hope

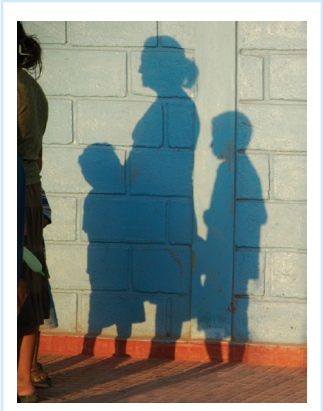
Most of you reading this newsletter have something in common – a heart of compassion for the poor and needy!

Did you know there are a variety of ways you can leave behind a legacy of hope and compassion that will continue even after you have passed away and your estate has been settled?

While this short story cannot replace competent planning, we will mention a few of the many different ways that you can leave such a legacy.

The most common way would simply be to designate a percentage of your estate to Joy Junction in your last will and testament.

A life insurance policy is another way to leave a legacy. This can take the form of a new or existing policy naming Joy Junction as the beneficiary. There are tax advantages that can take the form of exemptions from estate tax or a current income tax deduction for a paid up policy. In the case of a new policy, the premium payments can be income tax deductible.



Planning to leave a legacy can take the form of a Charitable Gift Annuity, Charitable Trusts, cash, personal property, real estate and/or securities. Retirement Plan Assets can also be used with Joy Junction named as beneficiary of the plan.

We are sure there is a form of planned giving that can help you continue to provide for the homeless many years after you have left this earth. Please call Bill Cates of RBC Wealth Management at (505) 872-5909 to explore your options today. Thank you for your compassion!

Joy Junction Online

www.joyjunction.org
facebook.com/joyjunction
twitter.com/joyjunction
myspace.com/joyjunction

Joy Junction

“A Hand Up,

A Ride That Could Save a Life

Joy Junction is often asked why we provide transportation for our residents?

Try to remember the last time you were out in 98 degree heat and had to walk several blocks. It probably was not a pleasant experience. Now try to imagine the same walk with a heavy backpack or bag.

Perhaps you have a few children in tow with nothing to eat or drink all day. Maybe not for a few days. You may have been chased away from a place you thought safe.

Now imagine you were downtown and called Joy Junction. A friendly voice informs you that there is room for you to stay overnight. What would happen if you had to walk six miles to our shelter location?

Such a walk would be difficult for the best of us, let alone someone who is malnourished or dehydrated. This is one reason we provide transportation.

Joy Junction has been blessed by the faithful service of volunteers throughout its 23 year history. Whether praying, doing yard work or maintenance, serving meals, mentoring or otherwise, our volunteers have been at the heart of the life changing work being done at Joy Junction.



We would like to tell you about one of our volunteers. He is a busy professional man who has faithfully supported Joy Junction with time and donations each and every week for over two decades. It almost sounds like a

Superman story, but is really about a caring man who wants to make a difference.

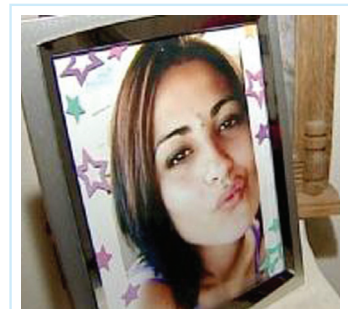
Bill is a Senior Vice President at a major investment firm. Every Wednesday for almost 21 years, Bill has provided the evening meal at Joy Junction.

Below is a story of a tragic loss we hope to prevent in the future by providing rides 24/7.

22-year-old Amber Archibeque died one morning in December 2008. As reported by the Albuquerque Journal, Amber was released and dropped off by a jail bus in downtown Albuquerque at 2 AM.

Sometime in between her drop off and connecting with her grandparents later in the morning, Amber found drugs. Drugs that took her life.

This tragic loss and danger on the streets are other reasons we provide rides. Please call 800-924-0569 if you see someone in need of transportation to our shelter.



A Super Volunteer

Usually, mild-mannered Bill sets out for Joy Junction making a quick change of clothes along the way. He then purchases the ingredients to prepare a meal to serve 150 or more residents. To complete his labor of love, Bill then cooks and serves the evening meal.

Sometimes Bill brings family and staff along to assist with the task at hand. When he has a scheduling conflict, Bill personally sends a cash donation to cover the cost of feeding our residents that evening.

In addition to his weekly labors, Bill also assists Joy Junction donors who are considering planned giving options (see “Leave a Legacy of Hope” on page five).

Joy Junction founder Dr. Jeremy Reynolds described Bill as, “An amazing man who is faithfully committed to the work of Joy Junction through thick and thin.”

While most readers cannot make the financial or time commitment of someone like Bill, your efforts in any form can make a difference! Please call our shelter at (505) 877-6967 to volunteer your services today. Who knows, if you come on a Wednesday, maybe Bill will let you try on his “cape.”

Joy Junction is a 501(c)(3) charity

Joy Junction

Not A Hand Out™

Thrift Shoppe on a Mission

Every donation and purchase made at the Joy Junction Thrift Shoppe helps us to employ graduates of our life recovery program!

Your gesture of kindness can help break the cycle of homelessness in a life that needs a second chance. As Joy Junction leads residents through their recovery, they are taught life skills that help them reintegrate and make the transition back to the tax paying working class.

Their time of employment with us also helps to establish a track record of stable employment that can make a difference in obtaining future employment.

Clothing donations help us restore dignity to the lives of

our residents, who often come to us with only one, weathered change of clothing. We accept most reusable articles of clothing, furniture and household items.

Donations for the Thrift Shoppe are received 7 days a week at 4500 2nd Street SW, 8AM-8PM. The store hours are Mon-Fri, 9AM-4PM, and Sat-Sun, 8AM-3PM.

Our Thrift Shoppe can be reached directly by calling (505) 873-8372. While shopping, you may find a treasure and you can help bring life change to someone in need!



Spread the Joy

You can help us spread the word about the life changing work going on at Joy Junction!

Your waiting area, lobby or counter top can be used to display our newsletters, and help us let others know about the work we are doing and ways they can help.



If you have a secure area that is continually staffed or monitored, we also have donation boxes available that will let your customers donate spare change. Every little bit helps us to provide a hand up to those in need.

Please call (505) 217-9586 if you would like to have display materials and/or a donation box at your place of business to help Joy Junction.

Can You Help?

Do you have a low-rent location for a new Joy Junction thrift store? If so, please call us at (505) 217-9586.

Monthly Giving Options

In addition to the recurring giving options below, there are one time options shown on page eight.

Yes, I want to support Joy Junction on a recurring basis!

Weekly. Process \$ _____ on _____ of each week.
Amount Day

Monthly. Process \$ _____ on the _____ of each month.
Amount Day

Quarterly. Process \$ _____ on the _____ of the _____ of each quarter.
Amount Day 1st-3rd Month

Pay by:

Credit Card (Write name, address and credit card information on reverse side.)

ACH (Bank Account - Write name and address on reverse. Fill in bank account information and sign below.)

9-Digit Routing No. (ABA)

Account No.

Savings

Checking

Signature

I hereby authorize Joy Junction to make recurring deductions from the designated account and to correct errors if necessary.

Federal Tax ID 85-0360268

4500 2nd St SW, PO Box 26568, Albuquerque, NM 87125-6568

e-mail: corporate@joyjunction.org



Joy Junction

Vehicle Donation Program

Did you know that when you donate your car, truck or recreational vehicle to Joy Junction, you can claim the blue book value as a tax deduction? Some restrictions apply.

When you donate vehicles to many other charities, IRS rules state that your tax-deductible gift is limited to \$500 or the selling price of the vehicle.

Joy Junction donates (or sells below value) most of our vehicles to the poor and needy. As a result, you will usually have the opportunity to claim the verifiable blue book value at the time of the donation.

For example, if you donated a 2001 Ford Ranger pickup to most charities, and it was sold for \$600, then \$600 would be the maximum gift amount. The same vehicle donated to Joy Junction with a blue book value of \$2,400 provides an opportunity to claim a tax-deductible gift of \$2,400!

In the example above, the donation would help a needy family overcome their transportation problems, provide cash to Joy Junction and give the donor a much larger tax deduction.

It pays to donate your vehicle to Joy Junction!

How You Can Help

You can help Joy Junction work to transform lives! Tax deductible donations can be sent using the coupon below. Planned giving options are discussed on page five for those who would like to ensure that their estate provides for the poor and needy.

Donations of new or used goods may be made at 4500 2nd Street SW, 7 days a week, 8 AM to 8 PM.

Joy Junction must undertake major construction and renovation to our chapel, dorm facilities, vocational training facility, women's center and Multi Purpose building.

With modest materials this project will run about 2.7 million dollars. Please dig deep to help us get this project off the ground.

If 2,700 families, churches, classes or businesses each gave \$1,000 towards construction, new facilities could be built soon.

Donations of building materials and professional services can also help Joy Junction meet the needs of the homeless and complete this project.



One Time Gift Options

In addition to the one time gift choices below, Joy Junction offers monthly donation options. Making regular donations from a checking, savings or credit card account is easy, and you can even choose the day of the month that your gift will be processed! Please fill in the necessary information below (and on the reverse side of the page for monthly contributions). Thank you!

Yes, I want to help! Program Support Construction/Repairs* Lunch Wagon*

- By check made payable to **Joy Junction**
- By credit card (please fill out information below)

Visa MasterCard Discover AmEx

Name

Card #

Address City State Zip

- Donate online at **www.joyjunction.org**
- By calling **505-217-9586**

I've enclosed a gift of:

\$50 \$100 \$500 \$1,000

\$5,000 Other _____

CSC (card security code)

Exp. Date

Signature (for credit cards)

*All funds donated for construction/repairs or for the lunch wagon are permanently restricted and will only be used for those purposes.